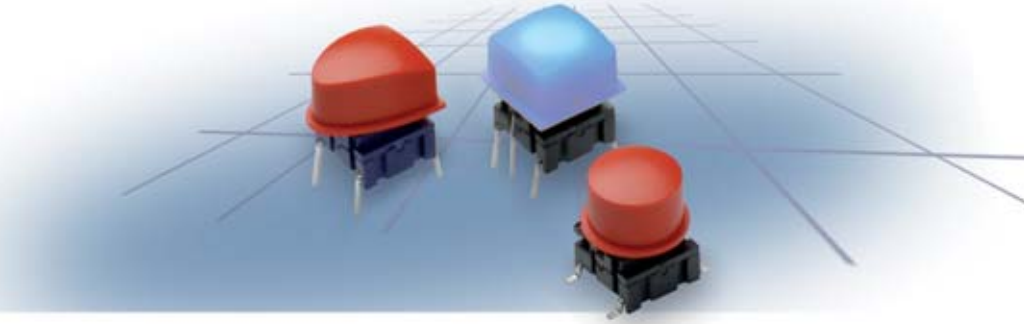


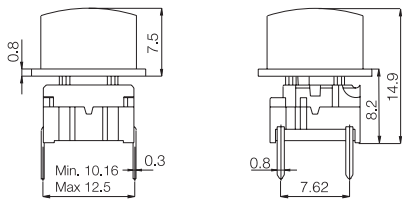
# multimec® 3F + 1T/1U/1V

## Technical Data

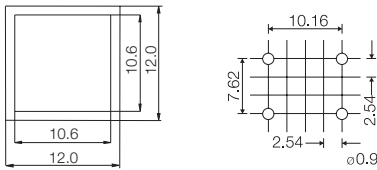
- through-hole or SMD
- 50mA/24VDC
- single pole/momentary
- 10.000.000 operations life time
- IP67 sealing
- temperature range:  
low temp: -40/+115°C  
high temp: -40/+160°C



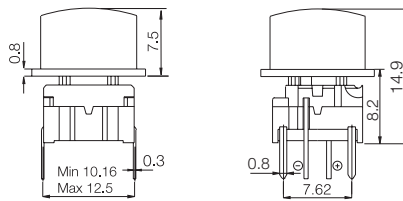
### Dimensions (through-hole)



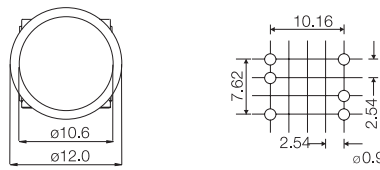
### PCB layout



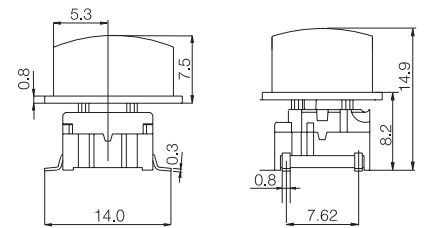
### Dimensions (w/LED)



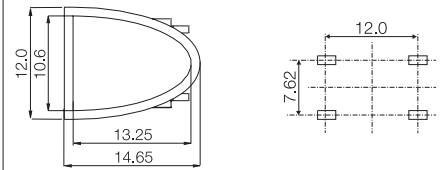
### PCB layout (top view)



### Dimensions (SMD)



### PCB layout



## How to order

**3 F**

Switch



Mounting

T through-hole  
S surface mount



L 6 low temp.

H 9 high temp.

+



Cap



00 blue

03 grey

08 red

09 black

**3 F**

Switch



Mounting

T through-hole



L 6 low temp.

H 9 high temp.



LED

23 green

45 yellow

88 red

+



Cap



**1 6**

frosted white

Keycaps shown on this page can also be used on **illumec™ switch 4F**

Ordering example: 3FTL645 + 1V16