

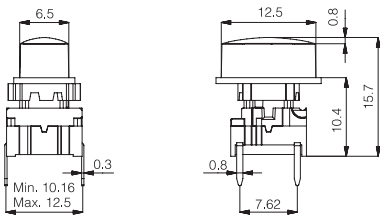
multimec® 3F + 1WA/1WD/1WP

Technical Data

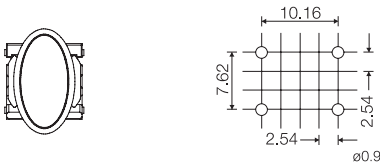
- through-hole or SMD
- 50mA/24VDC
- single pole/momentary
- 10.000.000 operations life time
- IP67 sealing
- temperature range:
low temp: -40/+115°C
high temp: -40/+160°C



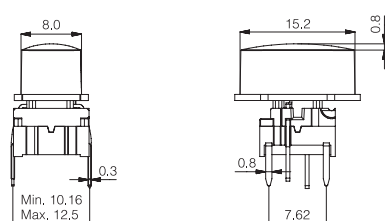
Dimensions (through-hole) 1WA



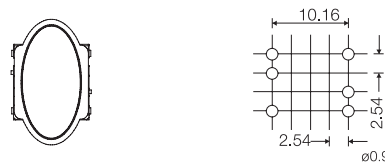
PCB layout



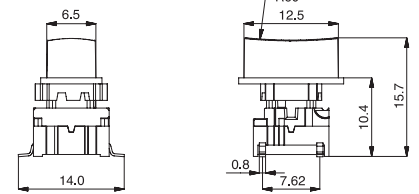
Dimensions (w/LED) 1WD



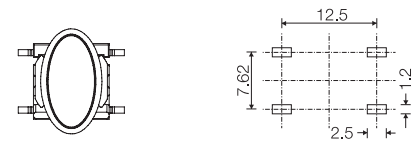
PCB layout (top view)



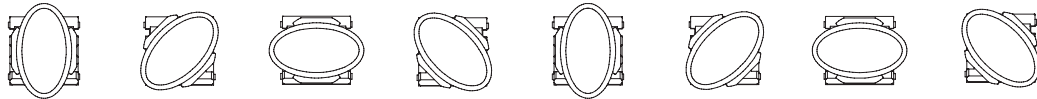
Dimensions (SMD) 1WP



PCB layout


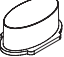
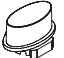


8 different position options



How to order

3 F	<input type="checkbox"/>	<input type="checkbox"/>	+	<input type="checkbox"/>	<input type="checkbox"/>
Switch	Mounting	L 6 low temp. H 9 high temp.		Cap	00 blue 03 grey 08 red 09 black 30 ultra blue 40 pigeon blue 42 aqua blue 53 metal light grey 57 metal dark grey
	T through-hole S surface mount			 1WA	
				 1WD	
				 1WP	

3 F	<input type="checkbox"/>	<input type="checkbox"/>	+	<input type="checkbox"/>	<input type="checkbox"/>
Switch	Mounting	L 6 low temp. H 9 high temp.		Cap	16 frosted white
	T through-hole			 1WA	
				 1WD	
				 1WP	

Keycaps shown on this page can also be used on **illumec™ switch 4F**

Ordering example: 3FTL6 + 1WA09 or 3FTL680 + 1WP16

1WA/1WD/1WP are in the shape of an ellipse. The mathematical formulas can be seen below.

Ellipse

Area:

$$A = \pi \cdot a \cdot b$$

Perimeter:

$$P = 4 \cdot a \cdot \int_0^{\frac{\pi}{2}} \sqrt{1 - k^2 \cdot \sin^2 \theta} \, d\theta, \quad k = \frac{\sqrt{a^2 - b^2}}{a}$$

$$\approx 2 \cdot \pi \cdot \sqrt{\frac{1}{2} \cdot (a^2 + b^2)}$$

