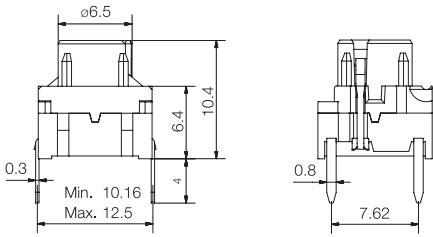


Technical Data

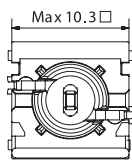
- through-hole or SMD
- 50mA/24VDC
- single pole/momentary
- 10.000.000 operations life time
- IP67 sealing
- temperature range:
 - high temp. switch; -40/+160°C
 - LED: -30/+85°C



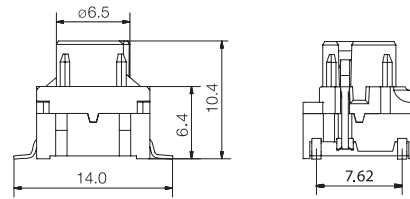
Dimensions (through-hole)



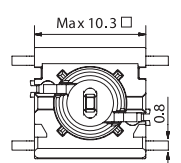
Top View



Dimensions (SMD)

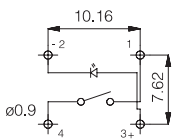


Top View

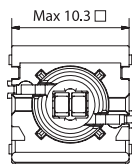
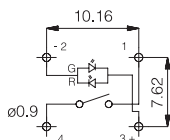


PCB layout and Circuit Diagram

1 LED

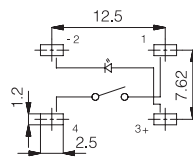


2 LEDS

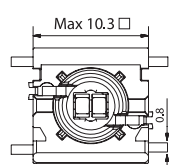
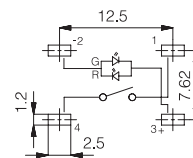


PCB layout and Circuit Diagram

1 LED



2 LEDS



How to order

4	F								
Switch	Mounting	LED	Illuminated						
SH9	surface mount	01	Cap						
TH9	through-hole	22							
		42							
		61							
		82							
		2242							
		8222							
		8242							

- 1D
- 1K,1KB,1KC
- 1N
- 1S
- 1T
- 1U
- 1V
- 1WA,1WD,1WP
- 1X

Colour code

11,16			
11,16	Cap	Solid Colour	Illuminated Lens
10,12,14,16,18			1E Solid Colour + lens 1,2,4,6,8
11			1F Solid Colour + lens 1,2,4,6,8
16			1Q Solid Colour + lens 1,6
16			1R Solid Colour + lens 1,6
16			
16			
11			

Colour codes

LEDs	Illuminated Caps
01 blue	10 frosted blue
22 green	11 transparent
42 yellow	12 frosted green
61 white	14 frosted yellow
82 red	16 frosted white
2242 green/yellow	18 frosted red
8222 red/green	
8242 red/yellow	

Lenses
1 transparent
2 green
4 yellow
6 frosted white
8 red

Solid Colours

1E,1F	1Q,1R
00 blue	00 blue
02 green	03 grey
03 grey	08 red
04 yellow	09 black
06 white	
08 red	
09 black	

Dimensions

Caps	See Page
1D,1E,1F	15
1K,1KB,1KC	16
1N	14
1Q,1R	18
1S	21
1T,1U,1V	19
1WA,1WD,1WP	17
1X	20

Ordering example: 4FSH98242 + 1D11 or 4FTH922 + 1T16