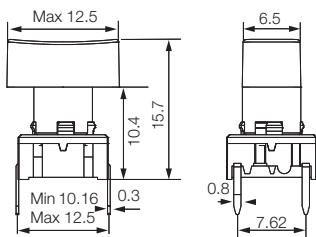


Technical Data

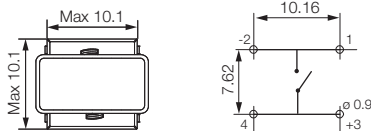
- through-hole or SMD
- 50mA/24VDC
- single pole/momentary
- 10.000.000 operations life time
- IP67 sealing
- temperature range:
LED: -40/+85°C
solid cap +65°C
transparent +85°C



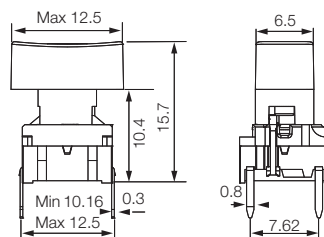
Dimensions (through-hole)



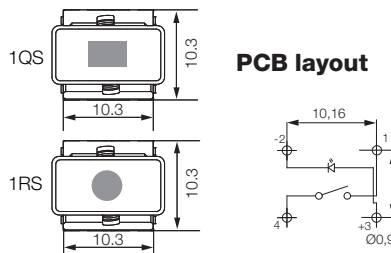
PCB layout



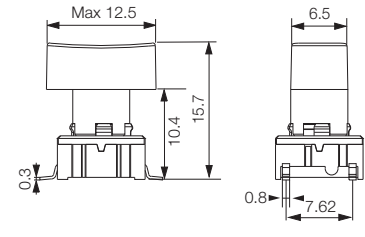
Dimensions (w/LED)



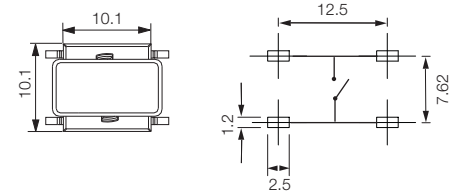
PCB layout



Dimensions (SMD)



PCB layout



HOW TO ORDER



Switch Mounting

3F TL/TH 6/9 through-hole
3F SH 9 surface mount



LED

01 blue
20 green
40 yellow
60 white
80 red
2040 green/yellow
8020 red/green
8040 red/yellow



Cap

1Q with lens
1R with lens



1P



Colour code

00 blue
03 grey
08 red
09 black



Lens

1 transparent
6 frosted white

11 transparent
16 frosted white

Dimensions (mm) Unless otherwise specified, all tolerances $\pm 0,2$

Ordering example: 3FTL680 + 1Q091