

TP1106S



1. Contact : Mechanical Contact
2. Contact Resistance : 100m Ω
3. Max.Rating : DC 12V, 50mA
4. Travel : 0.25 +0.2m/m -0.1m/m
5. L : 4.3 or 5.0 mm
6. Re-flow soldering
7. 16mm Reel Package : 1,800pcs

TP1138



1. Contact : Mechanical Contact
2. Contact Resistance : 100m Ω Max
3. Rating : DC 12V, 50mA
4. Travel : 0.25 +0.2m/m -0.1m/m
5. L : 4.3 or 5.0 mm
6. Re-flow soldering
7. Reel : 16m/m
8. Package : 1,250pcs

TP1105ASMD



1. Rating : DC 12V, 50mA
2. Travel : 0.25 +0.2m/m -0.1m/m
3. L : 4.3 or 5.0 mm
4. Operating Force :
160 \pm 30gf, 260 \pm 50gf
5. Contact Resistance : 100m Ω Max
6. Life : 100,000 Cycles Min

TP1138DPA



1. Contact : Mechanical Contact
2. Contact Resistance : 100m Ω Max
3. Rating : DC 12V, 50mA
4. Travel : 0.25 +0.2m/m -0.1m/m
5. Operating Force : 160 \pm 30gf
6. Life : 100,000 Cycles Min
7. Re-flow soldering
8. Reel : 16m/m
9. Package : 1,250pcs



1. Contact Resistance : 100m Ω Max
 2. Rating : DC 12V, 50mA
 3. Travel : 0.25 +0.2m/m -0.1m/m
 4. Operating Force : 180 \pm 30gf
 5. Life : 35,000 Cycles Min
 6. Re-flow soldering
 7. Reel : 16m/m
 8. Package : 2,000pcs
-

Engineering Drawings are available for all parts

TP1138B



1. Contact : Mechanical Contact
2. Contact Resistance : 100m Ω Max
3. Rating : DC 12V, 50mA
4. Travel : 0.25 +0.2m/m -0.1m/m
5. L : 9.5, 7.0, 7.3, 8.5, 13.0
6. Tube : 90pcs
7. Operating Force :
160 \pm 30gf, 260 \pm 50gf

TP1138QJB



1. Contact Resistance : 100m Ω Max
2. Rating : DC 12V, 50mA
3. Travel : 0.25 +0.2m/m -0.1m/m
4. L : 9.5, 7.0, 7.3, 8.5, 13.0
5. Tube : 90pcs
6. Operating Force :
160 \pm 30gf, 260 \pm 50gf
7. General Tolerance : \pm 0.3

TP1212 SMD



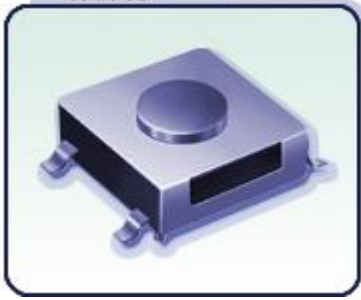
1. Contact : Mechanical Contact
2. Contact Resistance : 100m Ω Max
3. Rating : DC 12V, 50mA
4. Travel : 0.3 \pm 0.15m/m
5. Operating Force :
160 \pm 30gf, 260 \pm 50gf
6. Life : 100,000 Cycles Min

TP1212C SMD



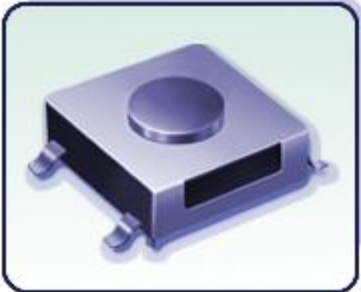
1. Contact : Mechanical Contact
2. Contact Resistance : 100m Ω Max
3. Rating : DC 12V, 50mA
4. Travel : 0.3 \pm 0.15m/m
5. Operating Force :
160 \pm 50gf, 260 \pm 50gf
6. Life : 100,000 Cycles Min

TP1140



1. Contact : Mechanical Contact
 2. Contact Resistance : 100m Ω Max
 3. Rating : DC 12V, 50mA
 4. Travel : 0.25 +0.2m/m -0.1m/m
 5. Operating Force : 260 \pm 50gf
 6. Life : 500,000 Cycles Min
 7. Re-flow soldering
 8. Reel : 12m/m
 9. Package : 3,400pcs
-

TP1140A



1. Contact : Mechanical Contact
 2. Contact Resistance : 100m Ω Max
 3. Rating : DC 12V, 50mA
 4. Travel : 0.25 +0.2m/m -0.1m/m
 5. Operating Force : 260 \pm 50gf
 6. Life : 500,000 Cycles Min
 7. Re-flow soldering
 8. Reel : 12m/m
 9. Package : 3,400pcs
-

Engineering Drawings are available for all parts



1. Contact : Mechanical Contact
2. Contact Resistance : 100m Ω Max
3. Rating : DC 12V, 50mA
4. Travel : 0.25 +0.2m/m -0.1m/m
5. Operating Force : 160 \pm 30gf
6. Re-flow soldering
7. Reel : 16m/m
8. Package : 1,700pcs



1. Contact : Mechanical Contact
2. Contact Resistance : 100m Ω Max
3. Rating : DC 12V, 50mA
4. Travel : 0.25 +0.2m/m -0.1m/m
5. Operating Force : 160 \pm 30gf
6. Re-flow soldering
7. Reel : 16m/m
8. Package : 1,700pcs



1. Contact : Mechanical Contact
2. Contact Resistance : 100m Ω Max
3. Rating : DC 12V, 50mA
4. Travel : 0.25 +0.2m/m -0.1m/m
5. Operating Force : 160 \pm 260gf
6. Life : 100,000 or 1,000,000 cycles
7. Re-flow soldering
8. Reel : 16m/m
9. Package : 1,700pcs



1. Contact : Mechanical Contact
2. Contact Resistance : 100m Ω Max
3. Rating : DC 12V, 50mA
4. Travel : 0.25 +0.2m/m -0.1m/m
5. Operating Force : 160 \pm 260gf
6. Life : 100,000 or 1,000,000 cycles
7. Re-flow soldering
8. Reel : 16m/m

9. Package : 1,700pcs



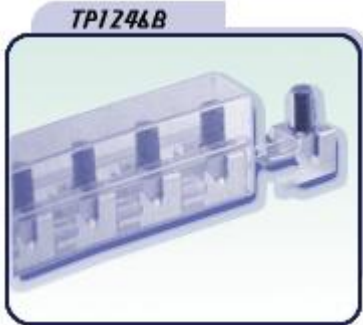
1. Contact Resistance : 100m Ω Max
 2. Travel : 0.25 +0.2m/m -0.1m/m
 3. Operating Force : 160 \pm 30gf
 4. Reel : 16m/m
 5. Package : 1,700pcs
-

Engineering Drawings are available for all parts



1. Contact : Mechanical Contact
2. Contact Resistance : 100m Ω Max
3. Rating : DC 12V, 50mA
4. Travel : 0.25 +0.2m/m -0.1m/m
5. Operating Force :
160 \pm 30gf, 260 \pm 50gf
6. Re-flow soldering
7. Reel : 16m/m
8. Package : 1,250pcs

MODEL	L
TP1138QJ	4.3m/m
TP1138QJA	5.0m/m

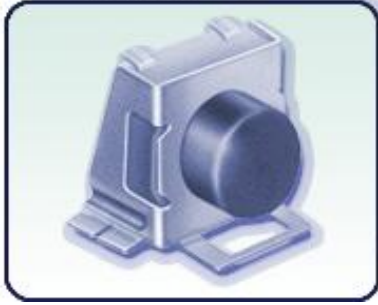


1. Contact : Mechanical Contact
2. Contact Resistance : 100m Ω Max
3. Rating : DC 12V, 50mA
4. Travel : 0.25 +0.2m/m -0.1m/m
5. Overall Length : 575m/m
6. Tube Package : 50pcs



1. Rating : DC 12V, 50mA
2. Travel : 0.25 +0.2m/m -0.1m/m
3. Operating Force :
200 \pm 50gf, 300 \pm 50gf
4. Permits Reflow soldering
5. The Quantity Bulk 1,000pcs

TP1162V2



1. Rating : DC 12V, 50mA
2. Travel : 0.25 +0.2m/m -0.1m/m
3. Operating Force :
200±50gf, 300±50gf
4. Permits Reflow soldering
5. The Quantity Bulk 1,000pcs

TP1150SMD



1. Operating Force : 160±30gf
2. Travel : 0.25 +0.2m/m -0.1m/m
3. Contact Resistance : 100mΩ Max
4. General Tolerance : ±0.3
5. The Quantity Package Per
Reel is 2000pcs
6. Reel : 16m/m

Engineering Drawings are available for all parts



1. Contact : Mechanical Contact
2. Contact Resistance : 100m Ω Max
3. Rating : DC 12V, 50mA
4. Travel : 0.25 +0.2m/m -0.1m/m
5. Operating Force :
200 \pm 50gf, 300 \pm 50gf
6. Re-flow soldering
7. L : 2.6, 3.4, 4.3, 5.1
8. Reel : 16m/m
9. Package : 1,600pcs



1. Contact : Mechanical Contact
2. Contact Resistance : 100m Ω Max
3. Rating : DC 12V, 50mA
4. Travel : 0.25 +0.2m/m -0.1m/m
5. Operating Force :
200 \pm 50gf, 300 \pm 50gf
6. Re-flow soldering
7. L : 2.6, 3.4, 4.3, 5.1
8. Reel : 16m/m
9. Package : 1,600pcs



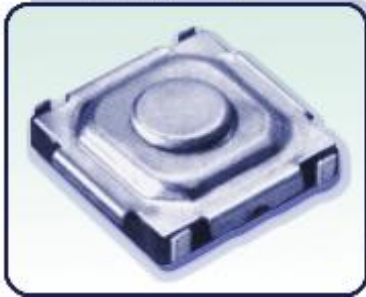
1. Contact : Mechanical Contact
2. Contact Resistance : 100m Ω Max
3. Rating : DC 12V, 50mA
4. Travel : 0.25 +0.2m/m -0.1m/m
5. Operating Force :
200 \pm 50gf, 300 \pm 50gf
6. Re-flow soldering
7. L : 2.6, 3.4, 4.3, 5.1
8. Reel : 16m/m
9. Package : 1,600pcs

TP1152



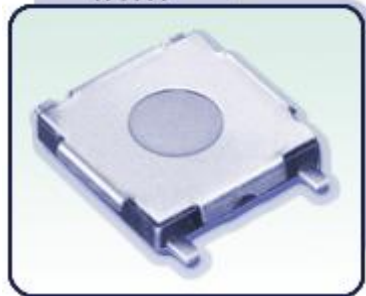
1. Contact : Mechanical Contact
2. Contact Resistance : 100m Ω Max
3. Rating : DC 12V, 50mA
4. Travel : 0.25 +0.2m/m -0.1m/m
5. Operating Force :
160 \pm 30gf, 260 \pm 50gf
6. Re-flow soldering
7. Reel : 12m/m
8. Package : 4,000pcs

TP1154



1. Contact : Mechanical Contact
2. Contact Resistance : 100m Ω Max
3. Rating : DC 12V, 50mA
4. Travel : 0.25 +0.2m/m -0.1m/m
5. Operating Force :
160 \pm 30gf, 260 \pm 50gf
6. Re-flow soldering
7. Reel : 12m/m
8. Package : 4,000pcs

TP1155



1. Contact Resistance : 100m Ω Max
2. Rating : DC 12V, 50mA
3. Travel : 0.25 \pm 0.1mm
4. Operating Force :
160 \pm 30gf, 260 \pm 50gf
5. Re-flow soldering
6. Reel : 12m/m
7. Package : 4,000pcs

Engineering Drawings are available for all parts



1. Contact : Mechanical Contact
2. Contact Resistance : 100m Ω Max
3. Rating : DC 12V, 50mA
4. Travel : 0.25 +0.2m/m -0.1m/m
5. Operating Force :
200 \pm 50gf, 300 \pm 50gf
6. Re-flow soldering
7. L : 2.6, 3.4, 4.3, 5.1
8. Reel : 16m/m
9. Package : 1,600pcs



1. Contact : Mechanical Contact
2. Contact Resistance : 100m Ω Max
3. Rating : DC 12V, 50mA
4. Travel : 0.25 +0.2m/m -0.1m/m
5. Operating Force :
200 \pm 50gf, 300 \pm 50gf
6. Re-flow soldering
7. L : 2.6, 3.4, 4.3, 5.1
8. Reel : 16m/m
9. Package : 1,600pcs



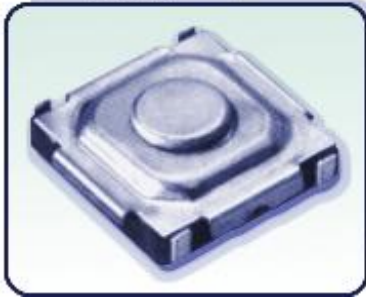
1. Contact : Mechanical Contact
2. Contact Resistance : 100m Ω Max
3. Rating : DC 12V, 50mA
4. Travel : 0.25 +0.2m/m -0.1m/m
5. Operating Force :
200 \pm 50gf, 300 \pm 50gf
6. Re-flow soldering
7. L : 2.6, 3.4, 4.3, 5.1
8. Reel : 16m/m
9. Package : 1,600pcs

TP1152



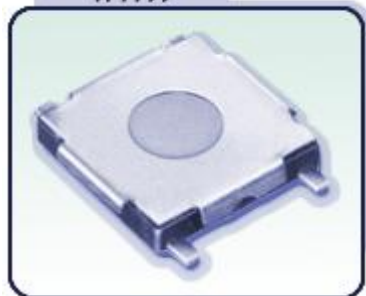
1. Contact : Mechanical Contact
2. Contact Resistance : 100m Ω Max
3. Rating : DC 12V, 50mA
4. Travel : 0.25 +0.2m/m -0.1m/m
5. Operating Force :
160 \pm 30gf, 260 \pm 50gf
6. Re-flow soldering
7. Reel : 12m/m
8. Package : 4,000pcs

TP1154



1. Contact : Mechanical Contact
2. Contact Resistance : 100m Ω Max
3. Rating : DC 12V, 50mA
4. Travel : 0.25 +0.2m/m -0.1m/m
5. Operating Force :
160 \pm 30gf, 260 \pm 50gf
6. Re-flow soldering
7. Reel : 12m/m
8. Package : 4,000pcs

TP1155



1. Contact Resistance : 100m Ω Max
2. Rating : DC 12V, 50mA
3. Travel : 0.25 \pm 0.1mm
4. Operating Force :
160 \pm 30gf, 260 \pm 50gf
5. Re-flow soldering
6. Reel : 12m/m
7. Package : 4,000pcs

Engineering Drawings are available for all parts



1. Contact : Mechanical Contact
2. Contact Resistance : 100m Ω Max
3. Rating : DC 12V, 50mA
4. Travel : 0.25 +0.2m/m -0.1m/m
5. Operating Force :
180 \pm 30gf, 260 \pm 50gf
6. Re-flow soldering
7. Reel : 16m/m
8. Package : 3,000pcs



1. Contact : Mechanical Contact
2. Contact Resistance : 100m Ω Max
3. Rating : DC 12V, 50mA
4. Travel : 0.25 +0.2m/m -0.1m/m
5. Operating Force :
180 \pm 30gf, 260 \pm 50gf
6. Re-flow soldering
7. Reel : 16m/m
8. Package : 3,000pcs



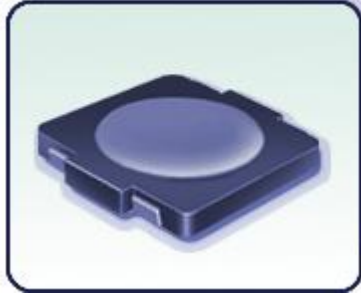
1. Operating Life : 500,000Cycles
2. Travel : 0.25 \pm 0.1m/m
3. Operating Force : 180 \pm 40gf
4. Re-flow soldering
5. Reel : 16m/m
6. Package : 2,500pcs

TP1112



1. Contact Resistance : 500m Ω Max
2. Rating : DC 12V, 50mA
3. Travel : 0.25 +0.1m/m
4. Operating Force : 180, 250 \pm 50gf
5. Life : 50,000 Cycle MIN
6. Re-flow soldering
7. Reel : 16m/m
8. Package : 2,000pcs

TP1197



1. Contact Resistance : 500m Ω Max
2. Rating : DC 12V, 50mA
3. Travel : 0.2 +0.1m/m
4. Operating Force : 160 \pm 30gf
5. Life : 50,000 Cycle MIN
6. Re-flow soldering
7. Reel : 12m/m
8. Package : 8,000pcs

Engineering Drawings are available for all parts