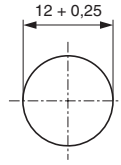




■ **CYLINDRICAL LIGHT INDICATORS**

COMPOSED OF A BASIC UNIT AND LENS REMOVABLE OR FIXED



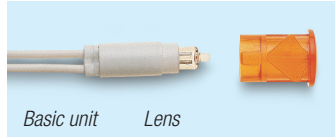
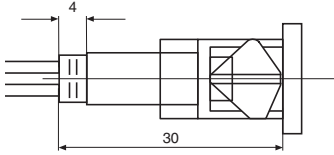
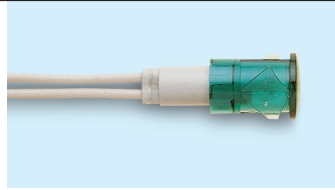
Hole
Ø 12 mm + 0,25/-0

Panel thickness
0,5/2,5 mm

■ SELF-LOCKING UNITS

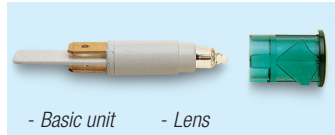
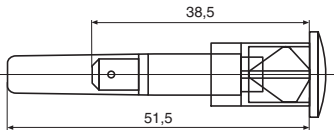
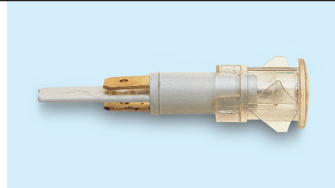
TB/012/SD

NI12RLXXXX



TBF/012/SD

NI12RTXXXX



Working voltage - VAC	⊕ Incandescence: 6/12/24 V	⊕ Neon and fluorescence: 110/250/400 V
Body and lens	Polycarbonate	
Wire ends	TB/012/SD NI12RLXXXX	PVC sheath wire cross, section 0,50 mm ² , wires length 220 mm, length of stripped wires end 6 mm
	TBF/012/SD NI12RTXXXX	Male faston 6,3x0,8 mm and 4,8x0,8 mm
Lens colour	Neon: red, orange, transparent, yellow-green (light green)	Incandescence: red, orange, transparent, yellow-green (light green), green, blue Fluorescent: green
Variants	Cables: length to customer's requirements - with clamped connectors - silicone insulated - tinned ends Removable lens Anti-luminescence resistor	

■ PANEL HOLE 12 MM DIA. - SELF-LOCKING UNITS

<p>SD 1 = STANDARD</p>	<p>SD 2</p>	<p>SD 3</p>
<p>SD 4</p>	<p>SD 5</p>	<p>SD 6</p>